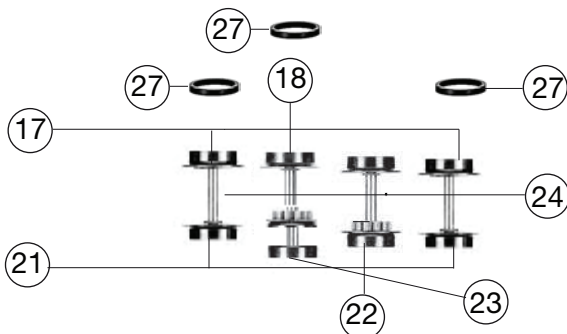
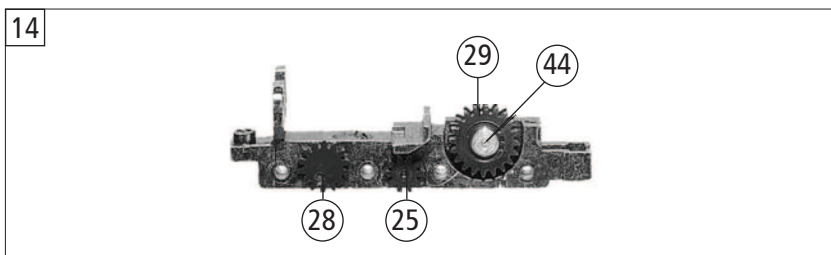
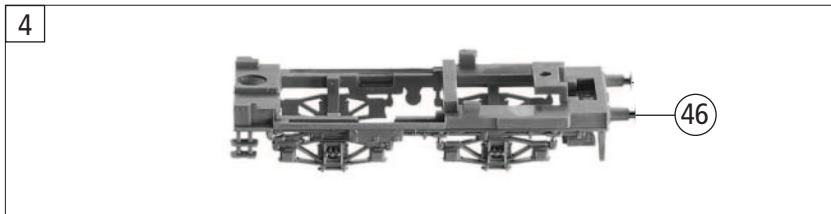
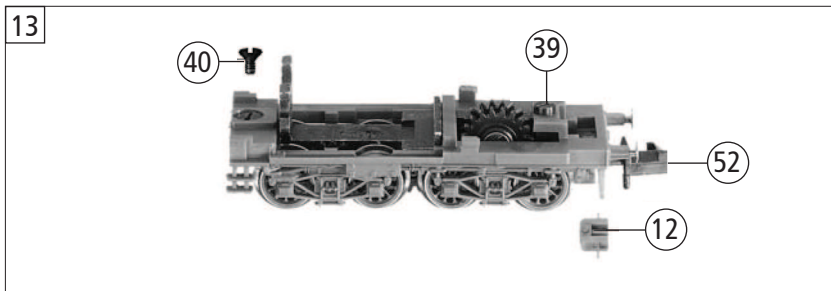
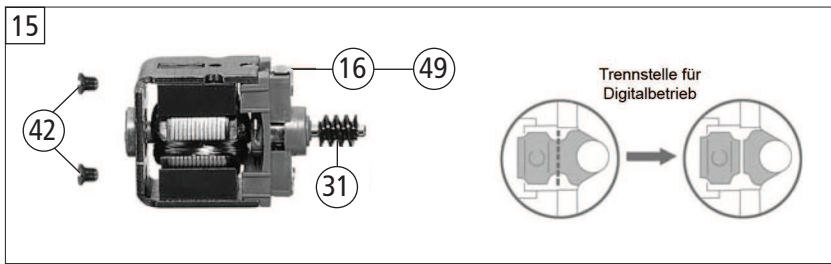
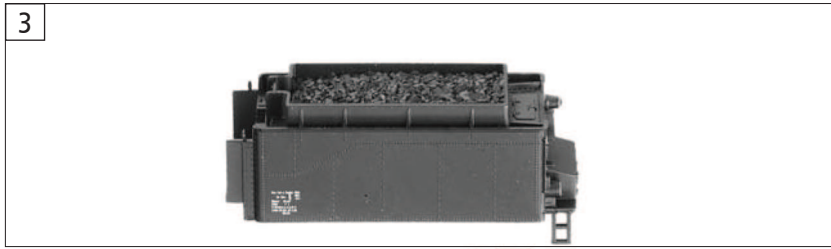


716087		Rh 638 ÖBB		=	N
Pos. Nr. Pos.no.	Beschreibung Description	Art.-Nr. Art.no.	Preisgruppe Price bracket		
1	LOKGEHÄUSE KPL.F.716087 Body assembly complete	10716087	031		
2	LICHTLEITER Light conductor	00137159	006		
3	TENDERGEHÄUSE KPL.f.716007 Tender body complete	20716007	019		
4	TENDERBODENRAHMEN KPL.716007 Tender framework complete	21716007	015		
5	TENDERBESCHWERUNG BR 38 P8 Tender balast	26716002	011		
6	LOKFAHRGESTELL KPL.f.716007 Loco chassis complete	30716007	038		
7	LOKFAHRGESTELL M.RÄDERN 716007 Loco chassis with wheels	31716007	030		
8	KREUZKÖPFE MIT VERBUNDSTANGE K Cross-heads with coupling rod	03271601	017		
9	DECKPLATTE UNTEN Lower cover plate	00337167	006		
10	KUPPELLASCHE Coupling latch	00347160	002		
11	VORLAUFGEST.KPL.m.SCHEIBENRAD Set of carrying wheels (front) with disc	37716007	016		
12	ADAPTER Adaptor	38701700	006		
13	TENDERFAHRGESTELL KPL.O.MOTOR Tender chassis complete w/o motor	40716007	031		
14	TENDERFAHRGESTELL MIT ZAHNRAD Tender chassis with gear wheels	41716002	019		
15	MOTOR Motor	50716082	029		
16	KOHLLENHALTER Brush holder	00507801	001		
17	TENDERRAD O.Z.M.N.ISO.ROT Tender wheel w/o gear wheel, with traction tyre	00517003	006		
18	TENDERRAD M.Z.M.N.ISO ROT Tender wheel with gear wheel, with traction tyre	00517004	006		
19	TREIBRAD ISO ROT F.BR 38 Tender wheel insulated,red	00517007	007		
20	KUPPELRAD ISO ROT F.BR 38 Coupled wheel insulated,red	00517008	007		
21	TENDERRAD O.Z.O.N.ISO.ROT Tender wheel w/o gear wheel, w/o traction tyre	00517013	007		
22	TENDERRAD M.Z.O.N.ISO. ROT Tender wheel with gear wheel, w/o traction tyre	00517017	007		
23	TENDERRAD O.Z.O.N. ISO. Tender wheel w/o gear wheel, w/o traction tyre	51717700	007		
24	ACHSE Axle	00527001	002		
25	ZAHNRAD Z:10 Gear wheel Z=10	00527160	005		
26	VOR.-RADSATZ KARMINRO Pony truck wheelset	53717200	011		
27	HAFTREIFEN Traction tyre	00547001	001		
28	ZAHNRAD Gear wheel	00567106	004		
29	ZAHNRAD Z:20/20 SCHWARZ Gear wheel Z=20/20; black	00567107	006		
	ZAHNRAD Z:4/12 ROT RAL 3002 (o.Abb.) Gear wheel Z=4/14 red (w/o illustration)	56718900	003		
31	SCHNECKE D = 4MM L = 5MM Worm gear D=4mm, L=5mm	00567601	007		
32	STROMABNEHMEREINSATZ KPL.M.ZYL. Power pick-up assembly with cylinder	60716007	031		
	HALTEPLATTE FÜR DECODER (o.Abb.) Mounting plate for decoder (w/o illustration)	00624155	002		



716087		Rh 638 ÖBB		=	N
Pos. Nr. Pos.no.	Beschreibung Description	Art.-Nr. Art.no.	Preisgruppe Price bracket		
34	HALTER F.DECODER Decoder support	00627160	007		
35	ENTSTOERDROSSEL Suppressor choke	00644101	007		
36	SCHALTPLATTE KPL. Switch plate complete	00657003	019		
	LOKEMPFAEGER DCC (RAILCOM)N (o.Abb.) N gauge DCC-decoder (railCom) (w/o Illustr.)	68716086	039		
38	SCHRAUBE M 1,4 X 3 Screw M 1,4 x 3	00700203	001		
39	SENKSCHRAUBE KS Countersunk screw KS	00702303	001		
40	SCHRAUBE Screw	00702304	001		
41	BLECHSCHRAUBE M.KREUZSCHLITZ Tapping screw	00713309	001		
42	SCHRAUBE Screw	00730025	002		
43	ZAPFENSCHRAUBE VERN. Spigot screw	00730028	001		
44	BOLZEN F. ZAHNRAD Bolt for gear wheel	00730504	002		
45	BOLZEN F. KUPPELSTANGE Bolt for coupling rod	00730565	002		
46	STECKPUFFER Plug-in buffer	00757002	002		
47	BLATTRICHTFEDER F.KUPPLUNG N Flat straightening spring for coupling	00767006	001		
	BLATTFEDER F.VORLAUFGESTELL (o.Abb.) Flat spring for front bogie (w/o Illustration)	76702000	001		
49	ERSATZ SCHLEIFKOHLEN Carbon brushes set	6518	---		
50	ERS.-GLUEHLAMPE KLAR M.STECKFA Replacement bulb, clear, with plug-in socket	00006535	008		
51	STANDARD-KUPPLUNG Clip-in exchange coupling	9522	---		
52	STANDARD-STECKKUPPLUNG Clip-in coupling	9525	---		